

Children's centres consultation – May 2021

Introduction

Croydon children's centres are part of Croydon Best Start, Croydon's partnership delivering services for children aged 0-5. The partnership includes families, health visitors, midwives, GPs, early learning practitioners and children's centres working together to ensure babies and children under-five have the best start in life.

The role of children's centres, as set out in the Sure Start Children's Centre statutory guidance is to support;

- child development and school readiness
- parenting aspirations and parenting skills
- child and family health and life chances

The council's financial challenges mean it has to make savings and this means changing the way it delivers some services and reducing others. Services for parents and carers with young children remain a priority and in our recent savings proposals consultation you told us how important the valuable support and resources our children's centres provide is. We are committed to providing the right Croydon Best Start services, in the right places, with the budget available.

Since 2016 the budget for children's centre services has remained at £2,162 million and as part of Croydon's renewal plans and associated savings, <https://news.croydon.gov.uk/croydon-outlines-budget-proposals-for-sustainable-financial-future/>) the council is proposing to reduce the budget to £1,162million, meaning we need to look at delivering services differently.

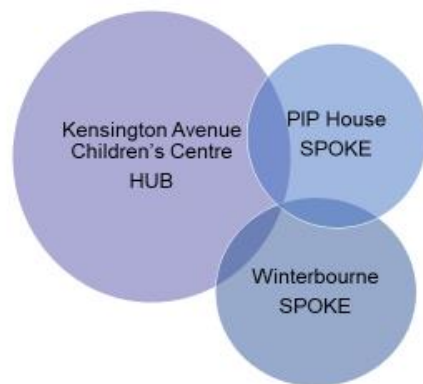
Our proposed new model for the service is set out below. In designing this model other options have been considered (please see 'other options considered' document) and we have carried out an equality impact assessment, which will be reviewed and updated during and after the consultation.

Proposed new model

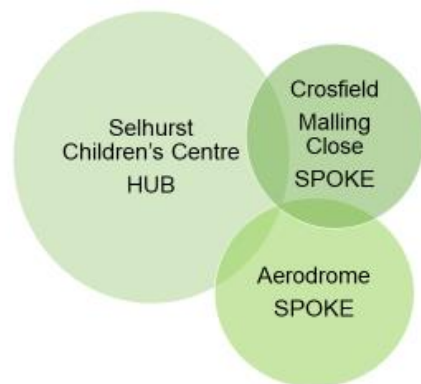
A three hub and six spoke is our preferred model for children's centre provision. It provides a dedicated hub in the north, central and south of the borough with services also available from six spokes, ensuring access to services across the borough. Services will be informed by the consultation findings and will vary so they meet the needs of local families.

Area	Children's centre hub	Children's centre spoke	Area covered
North	Kensington Avenue	Winterbourne	North West
		PIP House	North East
Central	Selhurst	Malling Close	Central East
		Aerodrome	Central West
South	Woodlands	New Addington	South East
		Byron	South West

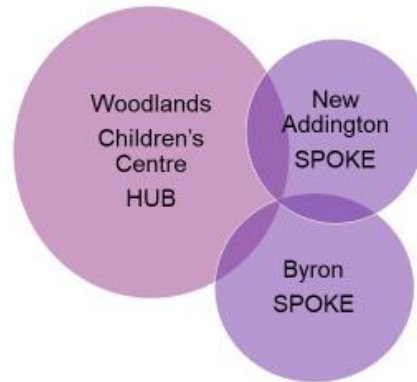
North Locality Children's Centre Hub and Spoke



Central Locality Children's Centre Hub and Spoke



South Locality Children's Centre Hub and Spoke



The hub and spoke model would mean:

- Having three children's centre 'hubs', one in each area, north, central and south, each delivering a full programme of services
- The hubs will also will coordinate a reduced programme of activities from two other children's centre buildings (spokes)
- One management team for each locality overseeing the service and employing the children's centre staff
- Closing Shirley Children's Centre (central east) and stopping services from Purley Oaks Children's Centre (central west), but providing outreach services in these areas
- Stopping delivering services from Ecclesbourne and Woodside Service Access Points (these are venues that have provided provide children's centre services on a part-time basis)

Proposed Children's Centre Hubs and Spokes Map

Proposed Model 3 Children's Centre Hubs and 6 Spokes	Locality	Locality
Kensington Avenue Winterbourne PiP House	North East North West North East	Provider 1
Selhurst Malling Close Aerodrome	Central West Central East Central West	Provider 2
Woodlands New Addington Byron	South East South East South West	Provider 3



A larger version of the map is available in Appendix 2.

How we designed the hub and spoke model

The new proposed model has been designed using the following data:

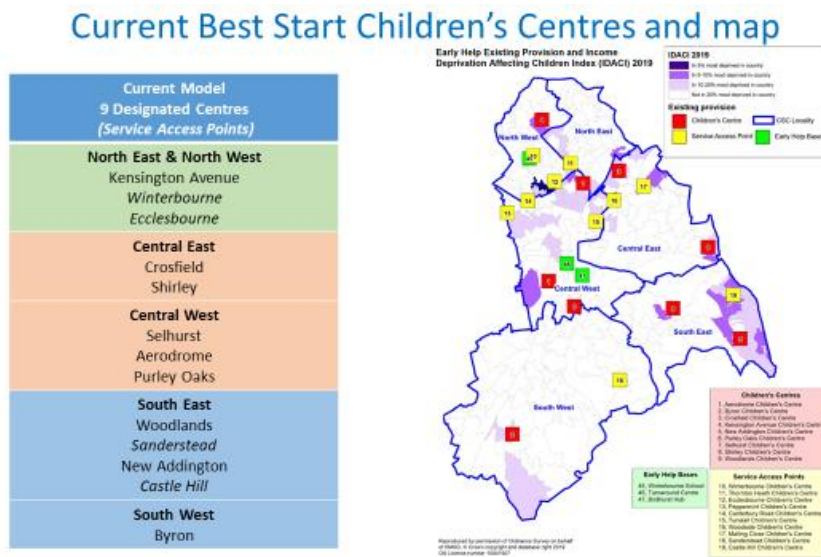
- Borough profile - where do children 0-5 and families that would benefit the most live
- Geographical location
- Ease of access for local families
- Transport links
- Facilities and accessibility within the children's centre buildings to enable continued working in partnership with health colleagues to deliver the Healthy Child Programme

Find out more about this data in the 'how we designed the hub and spoke model' document.

Current model

Currently Croydon has nine children's centres each delivering full range of services (see list and map below):

- Stay and play provision (e.g. Babbling Babies, Little Explorers, Now I am Two) Speech and Language Support groups (such as Chatterbox)
- Adult and Family Learning/ employability support
- Health Services (antenatal/ postnatal clinics, Well Baby Clinics, developmental checks with the Health Visitor)
- 1-2-1 family support;
- Parenting programmes and parent support
- Support to families in crisis through advice appointments



A larger version of this map is available in Appendix 1.

Read more about current access to services in the 'access to services' document.

A Vision for the 1001 Critical Days

The government has recently published a new document - The Best Start for Life, A Vision for the 1001 Critical Days. This document <https://www.gov.uk/government/publications/the-best-start-for-life-a-vision-for-the-1001-critical-days> is part of the early years healthy development review and outlines six areas for action to improve health outcomes of all babies in England:

- Seamless support for families
- A welcoming hub for families
- The information families need when they need it
- An empowered Start of Life workforce
- Continually improving the Start of Life offer
- Leadership for change

The proposals aim to ensure that centres are available support the aims of the Best Start for Life vision, including enabling services to be co-located wherever possible making it easier for young families to use services and get advice.

Tell us what you think

We want to hear your views on our proposal for children's centres. We're keen to understand whether the proposed spoke sites are the right locations, and ideas you may have for how we can provide services locally. Final proposals will inform the council cabinet decision in the summer 2021 prior to tendering for new contracts, the consultation report will inform service development and delivery.

How to have your say

- Complete the online survey before midnight, 13 June 2021
- Request a paper copy of the survey be sent to you by calling 020 8760 5453, and return it by 13 June 2021
- Request the survey and consultation information in a different format or language by calling 020 8760 5453

- Speak to staff at your local children's centre

If you would like to talk to somebody about taking part, please contact us via the Croydon Best Start Facebook page or email Croydon Best Start croydonbeststart@croydon.gov.uk and we will respond to you.